

Q'STRAIT.

QLK-150[®]

Q300M MINI

INSTALLATION INSTRUCTIONS

**STOP****READ ALL INSTRUCTIONS PRIOR TO INSTALLATION**

- This is a comprehensive step-by-step instruction guide on how to install the Q300M Mini Wheelchair Bracket **41 Amp batteries only**.
- Make sure to read, understand and follow all these instructions.
- To address any questions contact the nearest Q'Straint[®] office.
- All deviations and alterations from these instructions **MUST** be reported to both your supervisor and Q'Straint[®].
- For installation of the QLK Docking system, please refer to the separate Installation Instructions and the Use and Care Manual.



IMPORTANT SAFEGUARDS AND WARNINGS

- All equipment and components **MUST** be installed and serviced by an experienced and trained technician.
- The QLK-150 Wheelchair Docking System complies with all applicable requirements of ADA, FMVSS, CMVSS, SAE J2249, CSA Z604, AS2942, ISO 10542-1 and ANSI/RESNA WC-4 SECTION 18.
- This System is a complete integrated system, do not alter or modify it in any way and do not interchange or substitute any components. Any deviation from these recommendations is the responsibility of the installer.
- The QLK-150 Docking System, bracket and its components **MUST** be regularly inspected, cleaned and maintained.
- Do **NOT** attempt to repair, adjust, or modify any component(s) of the QLK-150 system or bracket without consulting a Q'Straint[®] representative.
- **The QLK-150 Wheelchair Docking System should not be operated by anyone who does not have full comprehension of how the System works or if the System is not working properly.**
- The QLK-150 Wheelchair Docking System, bracket and all system components including floor and wall anchorages **MUST** be replaced after a vehicle collision
- The QLK-150 Wheelchair Docking System **MUST** be installed with a compliant occupant restraint system (shoulder and lap belt).
- Broken and worn components **MUST** be replaced.
- All damages and defects **MUST** be reported to both your supervisor and Q'Straint[®].
- **Only use Q'Straint[®] components** with this system, including hardware and wheelchair interface bracket unless otherwise stated.
- Q'Straint wheelchair brackets and QLK docking station have been designed and tested as a system, for use with specific wheelchairs.
- Q'Straint supplies all the components/hardware required to install the system so the configuration is the same as that tested and set out in the individual installation instructions.
- Occasionally, wheelchairs may have additional components installed which are not detailed in our installation instructions and which may need to be temporarily removed in order to gain access to fixing holes or support frames to enable the attachment of the wheelchair bracket.
- It is the responsibility of the installer to ensure that all such wheelchair component(s) are put back in their original location using the original fixings or fixing of the same size and grade.
- Each wheelchair should be test driven after fitment of the bracket, to ensure it is functioning correctly.

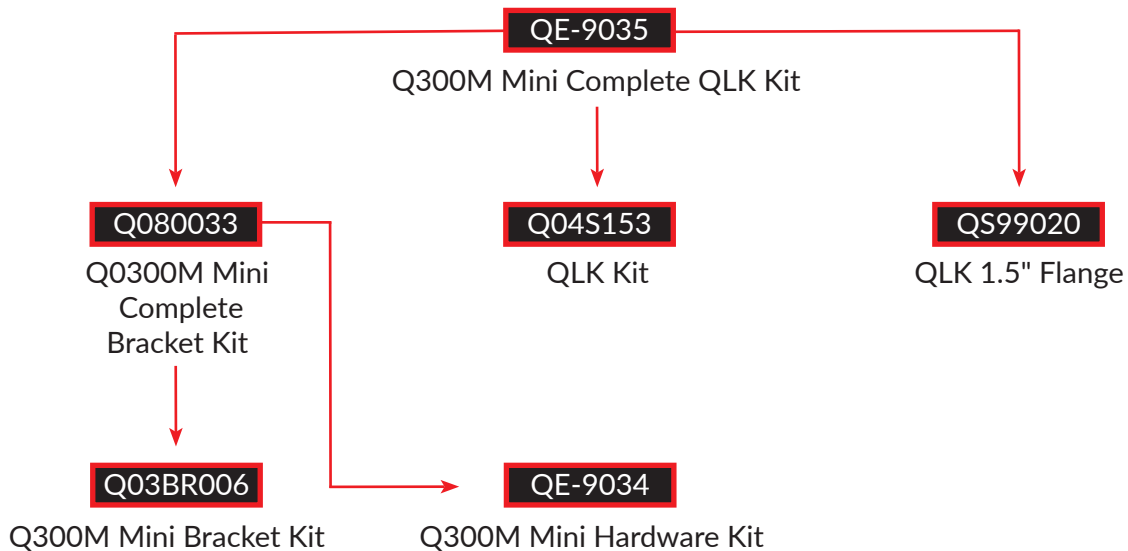
SAVE THESE INSTRUCTIONS

QLK-150[®]

TABLE OF CONTENTS



WARNINGS	2	STEP 7: ALIGN PLATE	7
COMPONENT STRUCTURE	2	STEP 8: INSTALL BOLTS	7
EQUIPMENT CHECKLIST	3	STEP 9: INSTALL BOTTOM PLATE	7
COMPONENT CHECKLIST	3-4	STEP 10: FIT THE DOCKING BOLT	8
STEP 1: TILT CHAIR BACKWARDS	5	STEP 11: INSTALLATION OF QLK DOCKING SYSTEM	8
STEP 2: UNSCREW BOSSES	5	STEP 12: ALIGNMENT AND ADJUSTING	8
STEP 3: PIVOT SEAT	5	STEP 13: REPLPACE BATTERIES	8
STEP 4: REMOVE COVER	6	STEP 14: REINSTALL ECU	8
STEP 5: DETACH MODULES	6	STEP 15: RE-SECURE THE SEAT	8
STEP 6: REMOVE BATTERIES	6		

COMPONENT STRUCTURE





EQUIPMENT CHECKLIST

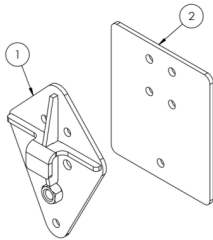
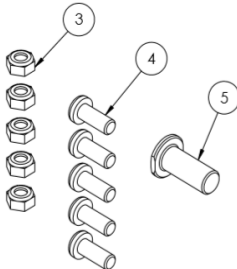
EQUIPMENT	SIZE	QTY.	
 Allen Key	5mm	1	<input type="checkbox"/>
	6mm	1	<input type="checkbox"/>
 Sockets	13mm	1	<input type="checkbox"/>



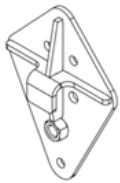
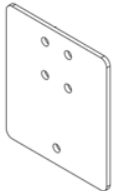
COMPONENT CHECKLIST

Bracket Kit Q080033 is to be used with Q045153 and QS99020. Complete Kit is part number QE-9035.



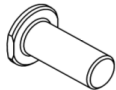
Within Kit Q080033:

ITEM	PART# AND DESCRIPTION	IMAGE	QTY.	
	Q03BR006 Q300M Mini Bracket Assembly		1	<input type="checkbox"/>
	QE-9034 Q300M Mini Hardware Kit		1	<input type="checkbox"/>

Within Kit Q03BR006:

ITEM	PART# AND DESCRIPTION	IMAGE	QTY.	<input checked="" type="checkbox"/>
1	Q03C0057 Q300M Mini Welded Assembly		1	<input type="checkbox"/>
2	Q03C0053 Q300M Mini Base Plate		1	<input type="checkbox"/>

Within Kit QE-9034:

3	QE9-5027 M10 Nylock Nut		4	<input type="checkbox"/>
4	QE9-8131 M10 X 25mm Button Head		1	<input type="checkbox"/>
5	QE9-8119 38mm Dommed Head Docking Bolt		1	<input type="checkbox"/>

Step 1: Locate Seating Fixings

Locate the two threaded bosses at the front of the chair underneath the seating system as shown in **Fig. 1**.



Fig. 1

Step 2: Unscrew bosses

Carefully unscrew the 2 bosses, as shown in **Fig. 2** being cautious about finger entrapment. If the bosses are not tethered, keep to one side.

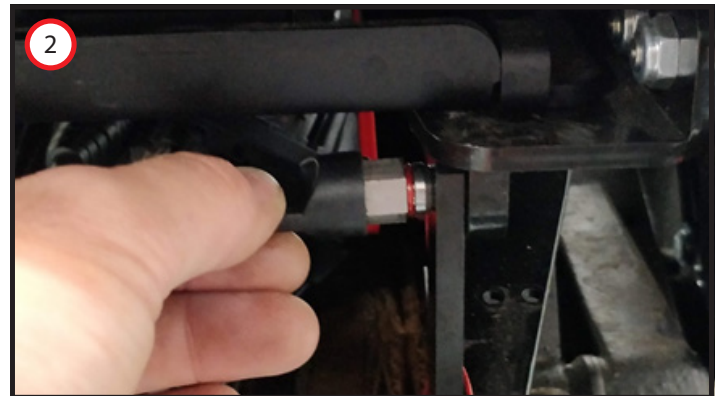


Fig. 2

Step 3: Pivot Seat

Pivot the whole seating system upwards to reveal the plastic cover as shown in **Fig. 3**.



Fig. 3

Step 4: Remove Cover

Remove the plastic cover (it is normally attached with Velcro) and set to one side. This will reveal the battery compartment and control electronics. **Fig. 4** shows the plastic cover in place.



Fig. 4

Step 5: Detach modules

Once the plastic cover is removed, shown in **Fig. 5**, detach the control modules from their corresponding fixing points using a 5mm Allen key (access to the batteries is later required).

Please note that there may be optional systems fitted – please make a note of where the components are fitted including their orientation to allow them to be replaced in exactly the same position. At this stage, the cables do not need to be disconnected; the aim is to allow access to the batteries. **Fig. 5** shows the control electronics aside allowing access to the batteries.

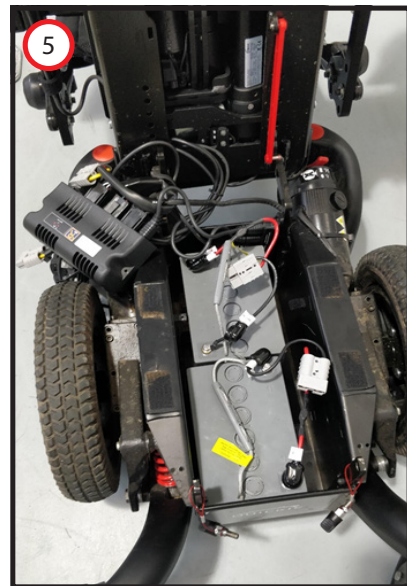


Fig. 5

Step 6: Remove batteries

Disconnect the batteries and remove both of them from the battery tray, as shown in **Fig. 6**. Keep to one side, ensuring the method of reconnecting is noted.

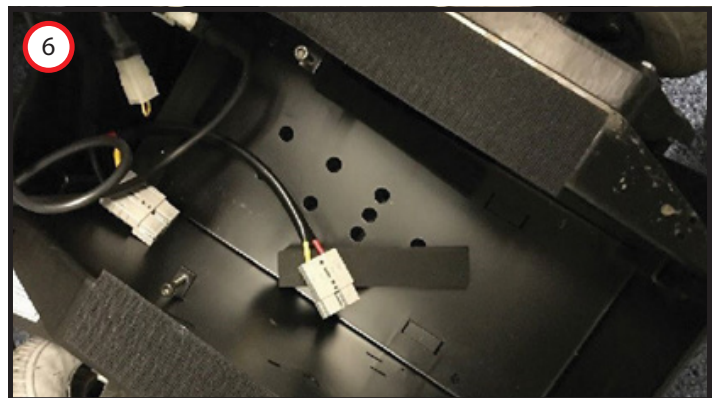


Fig. 6

Step 7: Align Plate

Place item 2 **Q03C0053 Base Plate** into the bottom of the battery tray. Align the single hole in the plate with the hole in the battery tray, as shown in **Fig. 7a** and **Fig. 7b**.

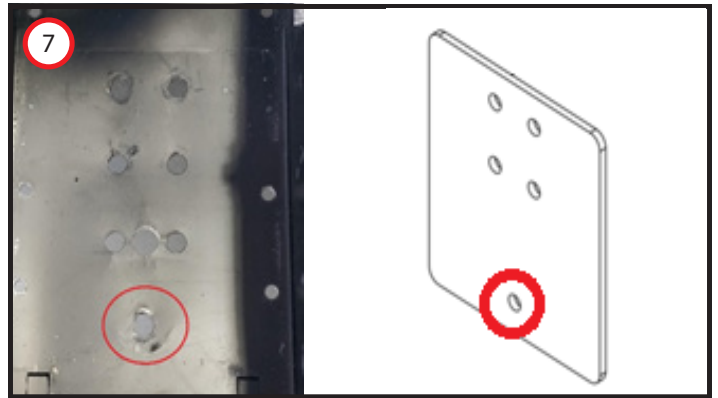


Fig. 7a

Fig. 7b

Step 8: Install bolts

Place item 4 **QE9-8131 M10 x 25mm Button Head** through all 5 holes to loosely hold the plate in place, as shown in **Fig. 8**.

Turn the wheelchair on its side carefully.



Fig. 8

Step 9: Install Bottom Plate

Align item 1 **Q03C0057 Welded Assembly** with the 5 bolts.

Place item 3 **QE9-5027 M10 Nylock Nut** over each bolt to sandwich the plates together and tighten using a 17mm Spanner, as shown in **Fig. 9**.



Fig. 9

Step 10: Fit the docking bolt

Fit item 5 **QE9-8119 Domed Head Docking Bolt** through item 1 **Q03C0057 Welded Assembly** at the desired height using, as shown in **Fig.10**.

Step 11: Fit the docking bolt

Install QLK docking system **Q04S153 QLK 150 Kit** and **QS99020 QLK 150 1.5" Flange** as per QLK 150 instructions: Q5-1150-QLK150 and Q5-1161-QLK150.

These instructions are provided with the QLK 150 docking station Kit Q04S153.



Fig. 10

Step 12: Alignment and Adjusting

Align the wheelchair with the QLK base.
Make any adjustments to the docking bolt height as required.
Refer to **Step 10** for the adjustment procedure for the docking bolt.

Step 13: Replace Batteries

Turn the chair the correct way up, reinsert the batteries into the battery tray and reconnect them as shown in **Fig. 13**.

Step 14: Reinstall the ECU

Replace the ECU at the back of the chair and replace the two screws using a 5mm Allen key.

Step 15: Re-secure the seat

Re-secure the seat back down onto the battery tray.
Refer to the inverse order of steps 1 and 2.

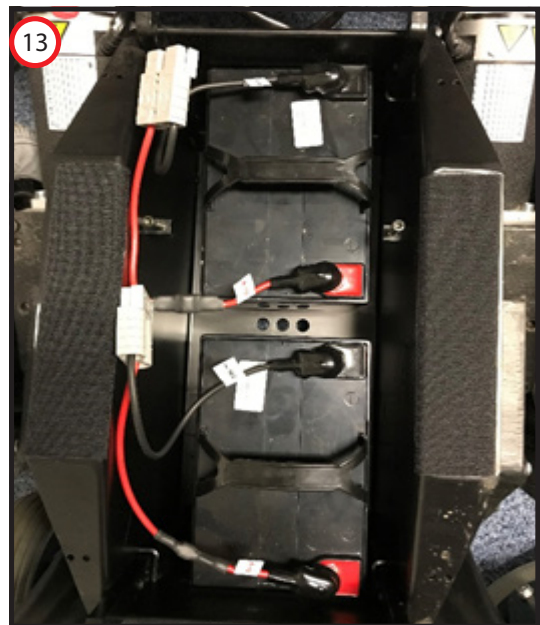


Fig. 13



www.qstraint.com

© 2019 Q'Straint®. All Rights Reserved.

Q'Straint® and Q'Straint® logo are registered trademarks of Q'Straint®, Inc. QLK is a trademark of Q'Straint®, Inc. Products mentioned herein are for identification purposes only and may be registered trademarks, trademarks and patents of their respective companies. All other brand names, trademarks, registered trademarks and patents are the property of their respective owners.

These instructions contain the most current information at the time of printing. Q'Straint® reserves the right to modify systems, components and content without notice.

? FOR TECHNICAL SUPPORT OR TO FIND YOUR NEAREST AUTHORIZED DEALER:

Q'STRAINT EUROPE

72-76 John Wilson Business Park
Whitstable, Kent, CT5 3QT
United Kingdom
Tel: +44 (0)1227 773035
Fax: +44 (0)1227 770035
Email: info@qstraint.co.uk

Q'STRAINT AMERICA

4031 NE 12th Terrace
Oakland Park, FL 33334
Tel: 800-987-9987
Fax: 954-986-0021
Email: qstraint@qstraint.com

Q'STRAINT AUSTRALIA

Tramanco Pty Ltd.
21 Shoebury Street,
Rocklea, Australia, QLD. 4106
Tel: +61 7 3892 2311
Fax: +61 7 3892 1819
Email: info@tramanco.com.au